

BENEFITS

Be Accurate: Simple UI guided dialogs and smart defaults prevent common mistakes

Be Confident: Customized schedules and reports gives you peace of mind

Be Aware: Real-time alerts, monitoring, and periodic reporting keep you informed

Be Timely: Manage complex TSM environments in just minutes a day

Be Smart: Drastically shorten the learning curve for both administrators and operators

Be Powerful: Manage complex multiple TSM-server environments from a single interface

Be Effective: Easily and quickly drill down to the root cause of any problem

Be Flexible: Customizable views and policies for users across your enterprise

FEATURES

- Manage multiple TSM servers through one centralized management interface
- Real-time monitoring of critical TSM Functions
 - Scheduled and on-demand client backup, archive, restore, and retrieve functions
 - Operator alerts and activity
 - TSM processes
 - TSM sessions
 - Library hardware
- Real time notification of a wide variety of TSM events, including:
 - TSM server failures
 - Client backup failures
 - Hardware failures
 - TSM database health

IBM® TIVOLI® STORAGE MANAGER (TSM) MADE EASY

Administrators spend less than 30 minutes per day with SSC

The STORServer Console (SSC) lets you configure and manage your TSM environment with a single, easy to learn, intuitive user interface (UI). Monitoring and reporting features keep you apprised of TSM server activities, in real-time, with alerts available for a wide variety of TSM conditions. An integrated help system explains how to use the SSC software so you are never lost in a confusing array of menus, submenus, views and un-documented right-clicks.

HOW IT WORKS

SSC is comprised of two components:

1. A UI featuring many advanced capabilities
2. A service that automatically manages your TSM environment while constantly monitoring it, keeping you apprised of its condition at all times

You work with TSM through the SSC UI, which uses guided dialogs, graphical report and task designers, targeted context-sensitive information filters and other techniques that simplify management. In short, the UI allows you to interact with TSM quickly and easily without worrying about the details.

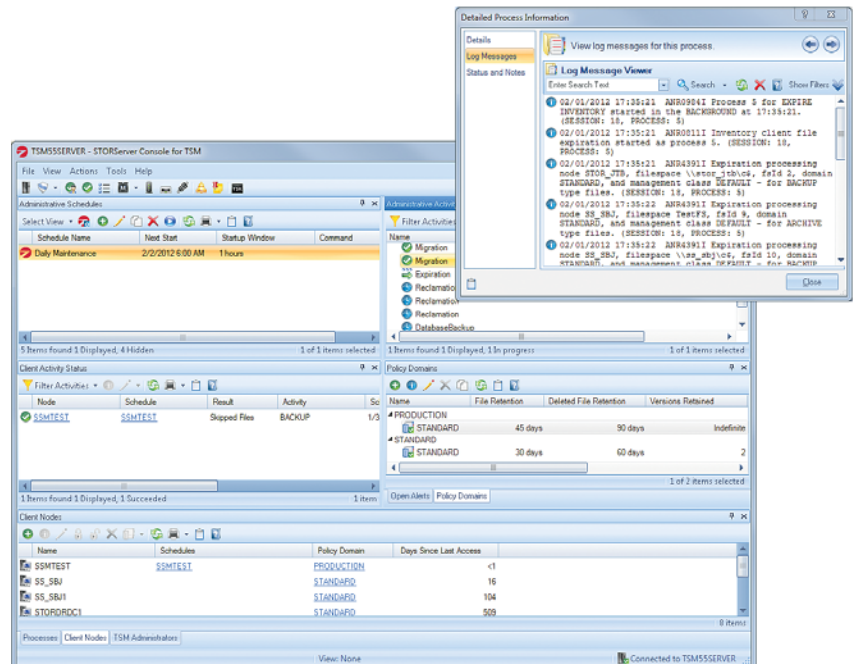
Through the UI, you can manage TSM manually, executing various tasks as necessary, or you can easily configure SSC to help manage TSM for you, automatically, in the background.

Using advanced scheduling capabilities and a graphical task designer, SSC can analyze your environment for you and provide a best practice recommendation for many routine maintenance tasks. These tasks can be scheduled using the common scheduling features of SSC, providing around-the-clock management of your TSM environment.

A simple set of customizable views allows you to perform daily media management tasks with no guesswork and without worrying about invalid or incorrect volume state information. In addition, for shared library configurations, all “check in” and “check out” operations can be performed through one interface, without logging in and out of various library clients and the library manager.

FEATURES (CONTINUED)

- Support TSM Basic and Extended edition
- Simplifies daily operator activities
- Supports shared library environments
- Simplifies hardware configuration and management
- Filters information to precisely target the root cause of issues
- Simplifies the creation and management of client backup strategies and policies
- Automates routine TSM administrative tasks
- Timeline and detailed views for all scheduled activities
- Tracks annotations made to scheduled activities
- Schedule designer graphically displays advanced SSC schedules and fully integrates with existing TSM schedules and scripts
- TSM activity log viewer with robust searching and filtering capabilities
- UI-guided commands that eliminate the need for a detailed understanding of the underlying TSM commands



System Requirements

Computer and Processor:

- 500 MHz or faster processor

Memory:

- 256MB

Hard Disk:

- 100MB. Up to 4GB available if hosting the SSC database

Operating System:

- Windows XP SP3, Windows 7 x32 or x64 OS, Windows Vista SP1, Windows Server 2003 with SP2 x32 or x64 OS, Windows Server 2008 R2 or later x32 or x64 OS

Additional Requirements:

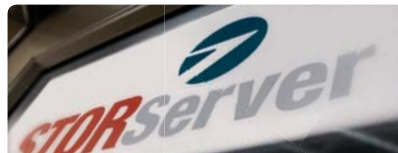
- Microsoft SQL Server (express edition) SP2, IBM Tivoli Storage Manager Server (V5.5.2.x through V5.5.x), V6.2 or newer

NOTES: Please see the product readme.htm file for the most up to date values.

Contact Information

STORSERVER, Inc.
485-B Elkton Drive
Colorado Springs, CO 80907
Phone: (719) 266-8777

Fax: (303) 563-2107
Email: requestinfo@storserver.com
www.storserver.com



ABOUT STORSERVER

STORSERVER, Inc., headquartered in Colorado Springs, CO is a leading provider of data backup solutions for the mid-market. We offer a complete suite of appliances, software, and services that solve today's backup, archive and disaster recovery challenges. For more information on STORSERVER, please visit the company's website at www.storserver.com.

storserver.com

©2011 STORSERVER, Inc. For additional information see our website storserver.com. *IBM, Tivoli, the IBM logo and the Business Partner emblem are trademarks of International Business Machines Corporation in the United States, other countries, or both.

